

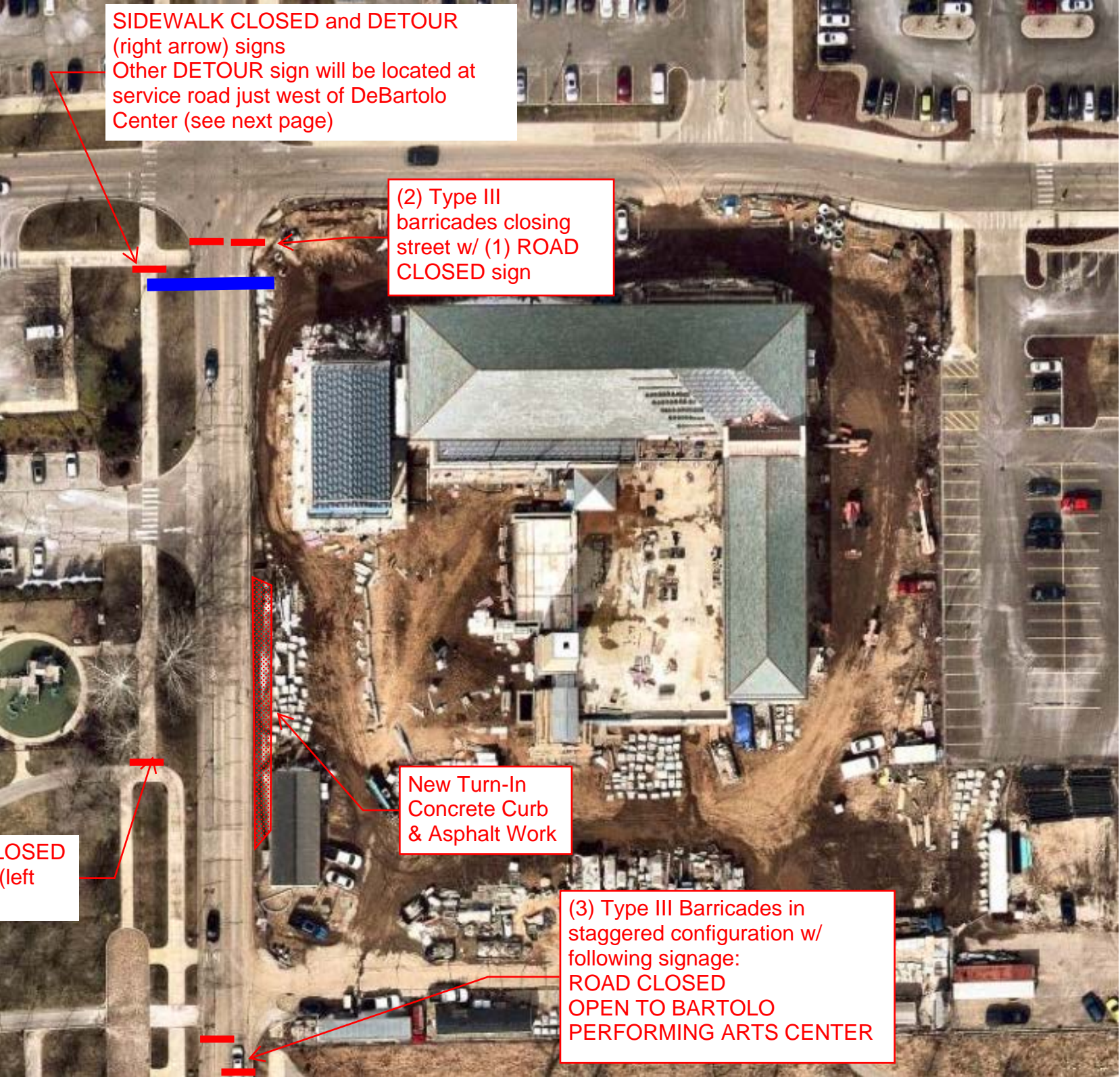
SIDEWALK CLOSED and DETOUR (right arrow) signs
Other DETOUR sign will be located at service road just west of DeBartolo Center (see next page)

(2) Type III barricades closing street w/ (1) ROAD CLOSED sign

New Turn-In Concrete Curb & Asphalt Work

(3) Type III Barricades in staggered configuration w/ following signage:
ROAD CLOSED
OPEN TO BARTOLO
PERFORMING ARTS CENTER

SIDEWALK CLOSED and DETOUR (left arrow) signs



10/13/2016

Detour sign w/
Arrow

Road
Closed

Type 3
Barricades

Sidewalk Closed
w/ Detour signs

University Trailer Location

PROPOSED
DETOUR
ROUTE

Road Closed

Type 3 Baaricade

Open to Performing Arts
Parking Sign

Google Earth

